

Responsible Research and Innovation

A cross-cutting issue in Horizon 2020

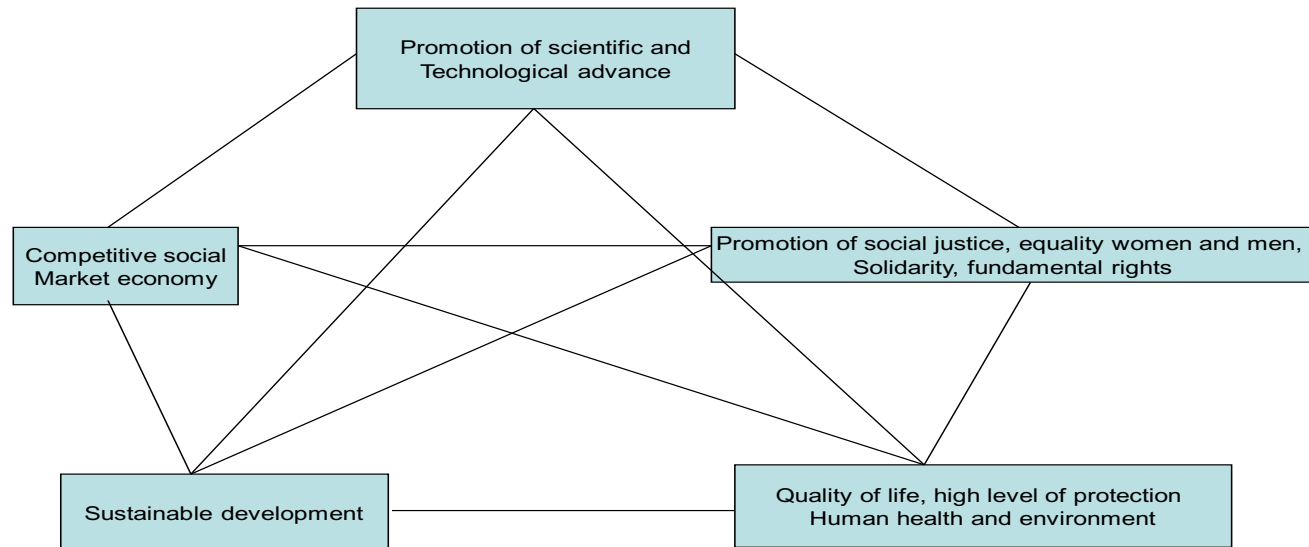
A systemic approach to science and society

University of Aveiro
January 2018

Not a new thing...

Treaty on the EU (art.3)

*'The Union shall (...) work for the **sustainable development of Europe** based on **balanced economic growth and price stability**, a **highly competitive social market economy**, aiming at **full employment and social progress**, and a **high level of protection and improvement of the quality of the environment**. It shall promote **scientific and technological advance**.'*



Normative Anchor points derived from the Treaty on the European Union

Society is facing many challenges today...



Health, demographic
change, and
wellbeing



Food, agriculture
and forestry, and
water



Secure, clean and
efficient energy



Smart, green and
integrated
transport



Climate action,
environment, and
resources



Europe in a changing
world: inclusive,
innovative and
reflective societies



Secure societies:
freedom and security
of Europe and its
citizens

...like these (7) identified by the European Commission

and science & technology sometimes create risks and dilemmas...

- GMOs
 - Fracking (= oil and natural gas extraction)
 - food safety
 - affordable medication
- among others...

Society needs a new R&I approach to address present and future controversies more efficiently.

Responsible Research and Innovation is a transparent, interactive process by which societal actors and innovators become mutually responsive to each other with a view to the (ethical) acceptability, sustainability and societal desirability of the innovation process and its (marketable) outcomes and impacts.

René von Schomberg, 2013

support

universidade de aveiro

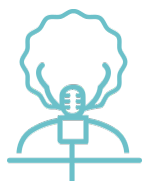


theoria poiesis praxis

research



**RRI is expected to tackle existing and emerging challenges by aligning values,
needs and expectations
of all actors involved in Research and Innovation**



**POLICY
MAKERS**

From funders to policy officers, research centre directors and representatives of learned societies, whether at a European, national, or local scale



**RESEARCH
COMMUNITY**

Researchers, innovators, research managers, public affairs and communication officers, and all those who support the diversity of the R&I system



**EDUCATION
COMMUNITY**

Teachers, students, science museums' staff, families and all those concerned with education at all levels



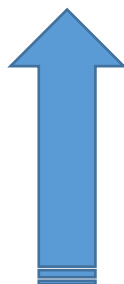
**BUSINESS
& INDUSTRY**

From contractors and SMEs to large transnational companies with strong R&I activity



**CIVIL SOCIETY
ORGANISATIONS**

From individuals to organisations, NGOs and the media, civil society is crucial to shape the R&I our society needs

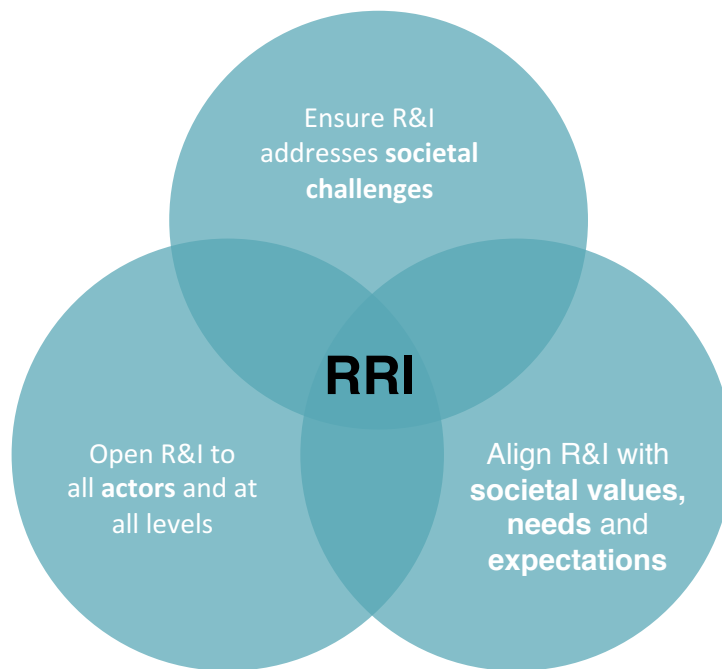


MARKET-BASED INNOVATION RESPONSIBLE INNOVATION

- State responsibility for risks
 - Macro-economic assessment: 'infinite growth'
 - steer less, inherently good
 - 'the faster, the better'
 - Technology-oriented R&D
- State responsibility for 'right' impacts of R&I
 - Economic and societal impact of 'knowledge': 'sustained growth'
 - responsive to basic needs, reflect basic values
 - Innovation is 'managed'
 - Issue-oriented R&I

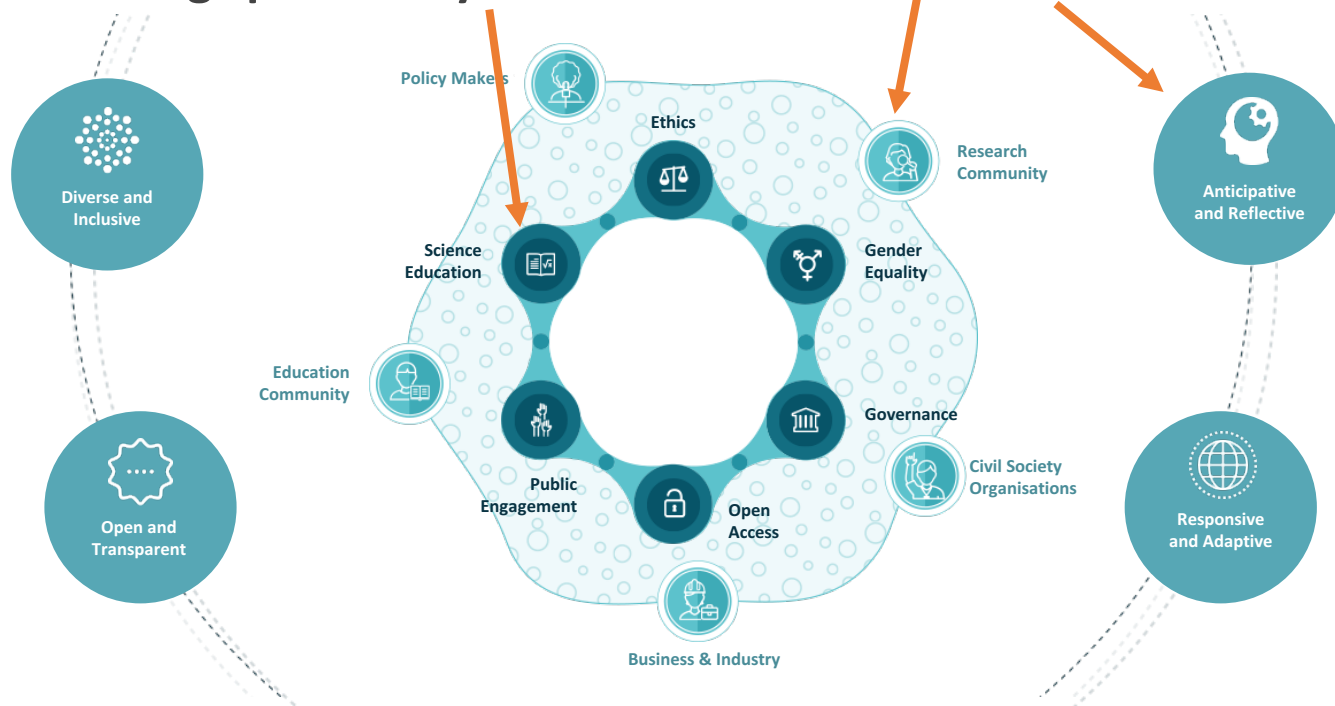


What do you do when you do RRI?



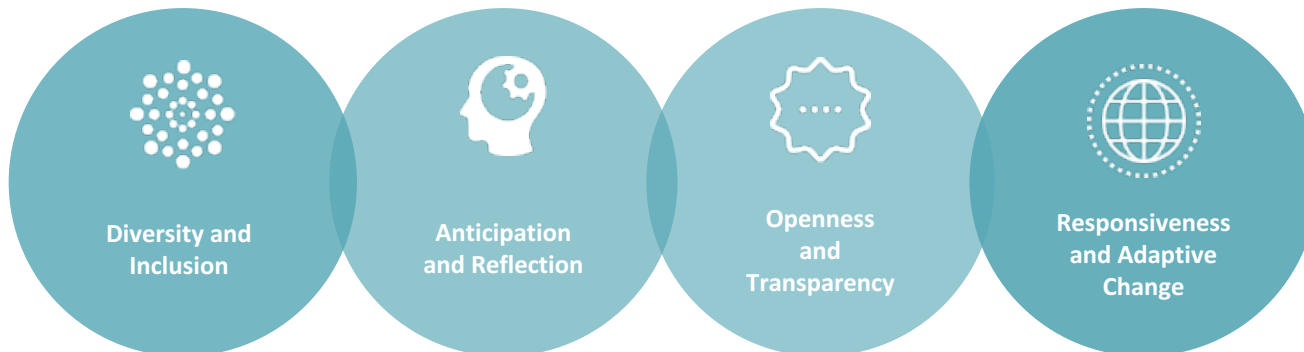
RRI seeks to **bring issues related to R&I into the open** in order to anticipate their consequences, and to **involve society** in discussing how science and technology may help us **create the world we want**.

**RRI is about: including all actors,
and considering specific key issues and process dimensions**

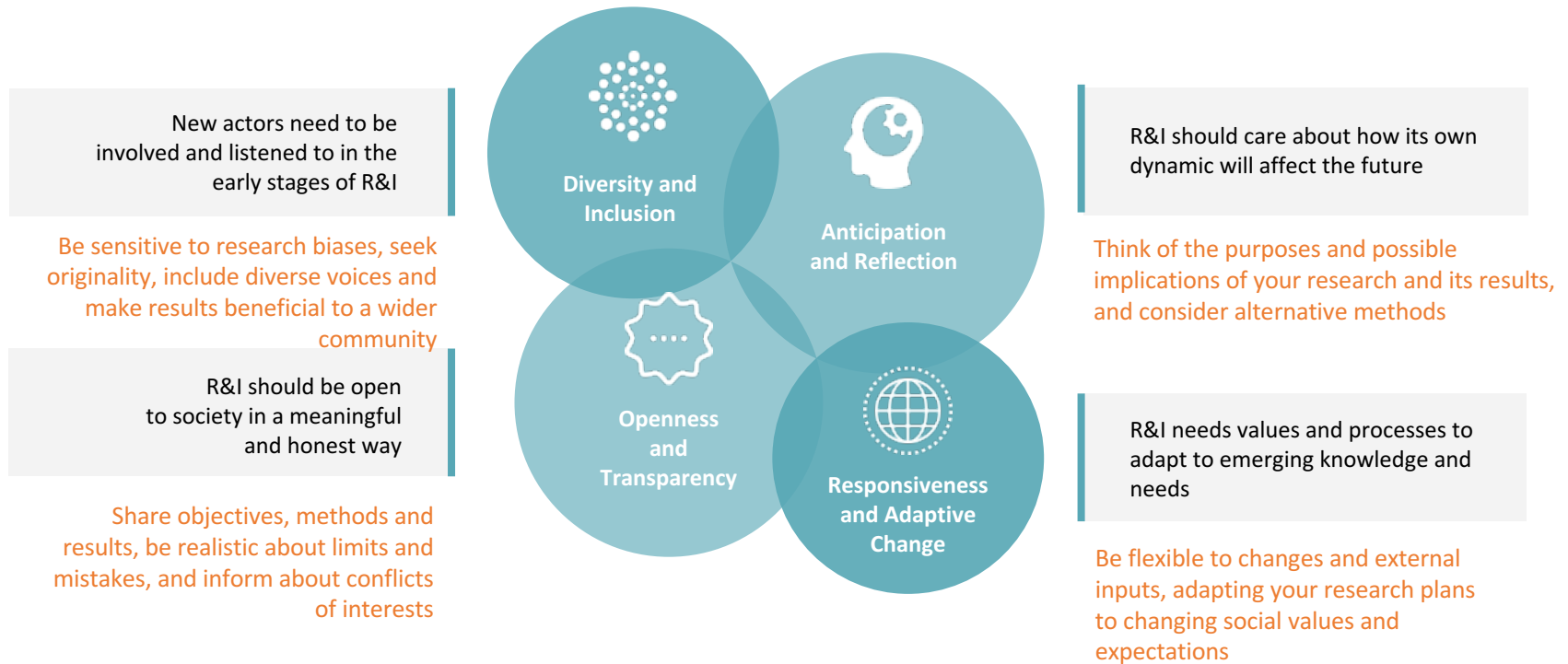




Implementing RRI: 4 process dimensions



These process dimensions mean



A normative framework for RRI: the 6 Policy Agendas



ETHICS

Ensuring research integrity, and science & society



GENDER EQUALITY

Promoting human resources in research for attaining gender balance



GOVERNANCE

Providing instruments to foster shared responsibility in R&I practices



OPEN ACCESS

Guaranteeing access to scientific knowledge to boost R&I



PUBLIC ENGAGEMENT

Fostering collaborative and multi-actor processes in R&I



SCIENCE EDUCATION

Increasing the knowledge and skills of citizens in order to promote scientific vocations and participation

At UA?

-The Ethics and Deontology Council is the advisory and support body for governing bodies in matters of ethics and deontology.

- Open, transparent and gender-equal work opportunities at the University.

- UA endorsement of the principles laid down in the European Charter for Researchers and the Code of Conduct for the Recruitment of Researchers (2016).

-Creation and update of the institutional repositiorium

-Participation in the OpenAire project

-Promotion of r&d projects with societal actors as city hall, parishes and social institutions.

-Participation of citizens in EU citizen jury projects.

-Promotion of open science days and other scientific activities with and for societies.

RRI is a way to do research that takes a long-term perspective on the type of world in which we want to live

Adopting RRI results into the following outcomes

LEARNING OUTCOMES

Engaged publics
Responsible actors
Responsible institutions

R&I OUTCOMES

Ethically acceptable
Sustainable
Socially desirable

SOLUTIONS TO SOCIETAL CHALLENGES

Seven Grand Challenges
identified by the EC



RRI can empower science communities to bond with society in solving our world's challenges, providing:



A whole new framework: new thinking, new principles, new processes



A more society-centered Research and Innovation



A wealth of funds through the EC's R&I programmes (Horizon 2020...)



RRI across Horizon 2020





SWAFS and RRI in HORIZON 2020

Three main priorities

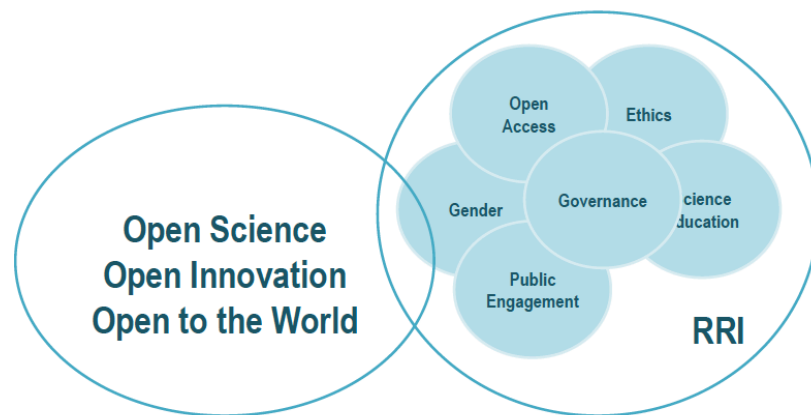
(Part I) Excellent science, EUR 24441 million

(Part II) Industrial leadership, EUR 17015 million

(Part III) Societal challenges, EUR 29679 million

Part V: Science with and for Society EUR 462,2 million

RRI is coherent across H2020 and in line (*or overlap*) with the 3Os of EU Commissioner Carlos Moedas





RRI in Horizon 2020 WP 2018-2020

- narratives more elaborated and calling attention to RRI – **don't ignore.**
- transversal and cross-cutting in the Horizon 2020 WP
- proposals shall evidence the RRI challenges, the strengths and weaknesses of each area
- relating directly to topics as necessary

Example of narrative:

14. Secure societies –Protecting freedom and security of Europe and its citizens

*The calls under 'Secure societies –Protecting freedom and security of Europe and its citizens' are in line with the Horizon 2020 Responsible Research and Innovation (RRI) cross-cutting issue, **engaging society on sensitive security issues, integrating the gender and ethical dimensions, ensuring the access to security research outcomes whenever possible and encouraging formal and informal science education relating to security. Activities will be multi-actor and underpinned by public engagement.***

Read the call text carefully and pay attention to RRI objectives & dimensions.



H2020-SWAFS-2018-2020 – the exclusive source for RRI dimensions?

*Science with and for society will help citizens, organisations and territories to open a new chapter of their development through joint research and innovation activities in five strategic orientations. It will contribute to the **implementation of Responsible Research and Innovation** through institutional governance changes in Research Performing (RPOs) and Funding Organisations (RFOs), focusing on developing new partnerships and involving researchers, policy makers, citizens and industry.*

Strategic orientation 1. Accelerating and catalysing processes of institutional change

Strategic orientation 4. Exploring and supporting citizen science

Strategic orientation 2. Stepping up support to Gender Equality in Research & Innovation policy

Strategic orientation 5. Building the knowledge base for SwafS

Strategic orientation 3. Building the territorial dimension of SwafS partnerships



Research participant portal

Search by:

- Topics with a RRI dimension
- Date: 12th January 2018
- [48 results](#) for open calls
- [104 results](#) for open and forthcoming calls

Topics with a Responsible Research & Innovation Dimension

Responsible Research and Innovation (RRI) means societal actors (researchers, citizens, policy makers, businesses, third sector organisations, etc.) working together during the whole research and innovation process to align the processes and outcomes with the values, needs and expectations of society. In practice, RRI is implemented as a package that includes public engagement in research and innovation, e.g. citizen science, enabling easier access to scientific results, the take-up of the gender dimension and ethics in the research and innovation content and process, and formal and informal science education.

104
Results

Status

☒ FORTHCOMING

☒ OPEN

☐ CLOSED

Sort by

☐ (Planned) opening date

☐ Deadline

☐ Topic title

☒ Topic identifier

Topic: [SwafS-21-2018: Advancing the Monitoring of the Evolution and Benefits of Responsible Research and Innovation](#)

Open

Publication date: 27 October 2017

Types of action: RIA Research and Innovation action

DeadlineModel: single-stage

Opening date: 05 December 2017

Deadline: 10 April 2018 17:00:00

Time Zone : (Brussels time)

Topic: [SwafS-20-2018-2019: Building the SwafS knowledge base](#)

Open

Publication date: 27 October 2017

Types of action: RIA Research and Innovation action

DeadlineModel: two-stage

Opening date: 05 December 2017

Deadline: 10 April 2018 17:00:00

2nd stage Deadline: 13 November 2018 17:00:00

Time Zone : (Brussels time)

Topic: [SwafS-19-2018-2019: Taking stock and re-examining the role of science communication](#)

Open

Publication date: 27 October 2017

Types of action: RIA Research and Innovation action

DeadlineModel: single-stage

Opening date: 05 December 2017

Deadline: 10 April 2018 17:00:00

Time Zone : (Brussels time)

Topic: [SwafS-18-2018: Taking stock of the application of the precautionary principle in R&I](#)

Open

Publication date: 27 October 2017

Types of action: RIA Research and Innovation action

DeadlineModel: single-stage

Opening date: 05 December 2017

Deadline: 10 April 2018 17:00:00

Time Zone : (Brussels time)





Not only Swafs...

SC9- Sustainable Food Security

Cross-cutting Priorities:

[RRI](#)

[Gender](#)

[Socio-economic science and humanities](#)

[Blue Growth](#)

Topic: DT-SFS-14-2018: Personalized Nutrition

Open

Publication date: 27 October 2017

Focus area: Digitising and transforming European industry and services (DT)

Types of action: IA Innovation action

DeadlineModel: single-stage

Opening date: 31 October 2017

Deadline: 13 February 2018 17:00:00

Time Zone : (Brussels time)

SC9- Sustainable Food Security

Cross-cutting Priorities:

[International cooperation](#)

[Blue Growth](#)

[RRI](#)

[Gender](#)

[Socio-economic science and humanities](#)

Topic: LC-SFS-03-2018: Microbiome applications for sustainable food systems

Open

Publication date: 27 October 2017

Focus area: Building a low-carbon, climate resilient future (LC)

Types of action: IA Innovation action

DeadlineModel: single-stage

Opening date: 31 October 2017

Deadline: 13 February 2018 17:00:00

Time Zone : (Brussels time)

SC9- Sustainable Food Security

Cross-cutting Priorities:

[Blue Growth](#)

[Socio-economic science and humanities](#)

[RRI](#)

Topic: CE-RUR-08-2018-2019-2020: Closing nutrient cycles

Open

Publication date: 27 October 2017

Focus area: Connecting economic and environmental gains - the Circular Economy (CE)

Types of action: RIA Research and Innovation action

DeadlineModel: two-stage

Opening date: 31 October 2017

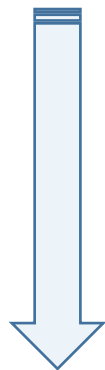
Deadline: 13 February 2018 17:00:00

2nd stage Deadline: 11 September 2018 17:00:00

Time Zone : (Brussels time)



Regarding Health and biomedicine...



Personal, predictive, and preventive



In sum:

RRI enables a broader way of defining researchers and their role in society, helping both science and society to consider long-term issues.

Engaging all actors in research according to RRI values can yield results better suited to societal needs.

Paying attention to RRI orientations will strengthen **research projects** by emphasizing openness, transparency, diversity, inclusiveness and adaption to changes. **Evaluators will check it.**



Need help?

The RRI Toolkit: A wealth of resources to help you implement RRI



TOOLS

Use manuals, guidelines, and 'how tos' to implement RRI.



INSPIRING PRACTICES

Find inspiration in RRI success stories across Europe.



PROJECTS

Get to know other projects on RRI and find potential partners.



LIBRARY

Learn of RRI from articles, reports, cross-analyses, and more.



HOW TOs

Get concrete examples on how to put RRI into practice in different contexts.



SELF-REFLECTION TOOL

Reflect on how RRI your own professional practice is.



TRAINING MATERIALS

Organise trainings in RRI using showcases and presentations.



COMMUNICATION MATERIALS

Spread the word on RRI with videos and presentations.

Get concrete examples on how to put RRI into practice

How Tos offer guidance and concrete examples on the use of specific resources from the Toolkit to address common challenges faced by the Research Community in its daily work, such as:



How to incorporate RRI in policy/funding institutions



How to incorporate RRI in higher education institutions



How to set up a participatory research agenda



How to incorporate the RRI principles in a funding call



How to design a RRI-oriented project proposal



How to co-create community-based participatory research



How to embed RRI in citizen science





How Tos in detail

By clicking on a How To you will access the **complete guideline** for its implementation

RRI Tools

LANDING ON RRI

TOOLKIT

TRAINING

RRI COMMUNITY

REGISTER/LOGIN

RESEARCH COMMUNITY

How to incorporate the RRI principles in a funding call

Much has been said about the societal impact of research and innovation (R&I). Responsible Research and Innovation (RRI) is an umbrella concept that includes in a holistic way different policy agendas aimed at improving the relation between science and society. Guaranteeing research integrity, open access scientific results, and gender equality in research content and teams are all crucial for properly embedding science in society. In a context of global societal challenges, such as climate change or the ageing of our societies, broader societal involvement in R&I is needed to collaboratively reflect on the futures we aspire to as societies.

Integrating the values, guiding principles and requirements of RRI in a funding scheme, whether existing or brand new, can contribute to increasing the ethical acceptability, sustainability and social desirability of the processes and outcomes of a programme. This section offers guidance for developing a funding policy aligned with the RRI principles.

Before the project: Defining the scope of the call

1. Setting priorities with stakeholders
Sometimes public consultations and multi-stakeholder dialogues are organised by the

HOW TO INCORPORATE RRI IN POLICY/FUNDING INSTITUTIONS >

HOW TO INCORPORATE RRI IN HIGHER EDUCATION INSTITUTIONS >

HOW TO SET UP A PARTICIPATORY RESEARCH AGENDA >

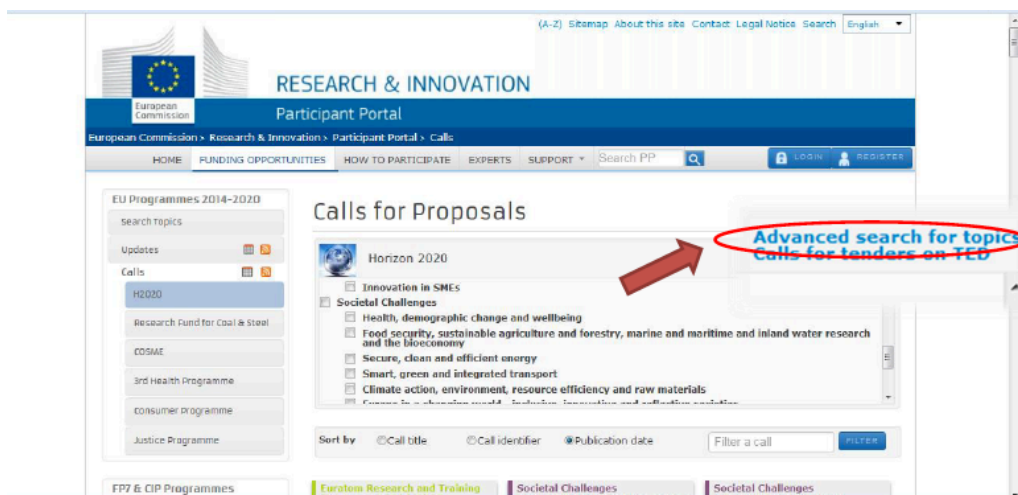
HOW TO INCORPORATE THE RRI PRINCIPLES IN A FUNDING CALL >

universidade
de aveiro
gabinete de apoio
à investigação

26



Where to identify RRI opportunities?



3 O's

RRI

Quick finder for H2020 topics of cross-cutting priorities:

- Accelerating Clean Energy Innovation
- Blue Growth
- Cross-cutting Key-Enabling Technologies (KETs)
- Contractual Public-Private Partnerships (cPPPs)
- ERA-NET
- Gender
- Innovation Procurement
- International cooperation
- Open Innovation
- Open Science
- Open to the World
- Responsible Research & Innovation
- SME Instrument
- Social sciences and humanities



Some useful links:

<https://ec.europa.eu/programmes/horizon2020/en/h2020-section/responsible-research-innovation>

<https://www.rri-tools.eu/>

<http://www.sisnetwork.eu/rri/>

<https://res-agera.eu/rri-resources>



Thank You & Contact Us!!!

Research Support Office – research@ua.pt

Luísa Fernandes Sal - luisa.fernandes@ua.pt

Phone: (+351) 234370848, ext. 52113

Fax: (+351) 234370089

Tatiana Lima Costa - tatiana.costa@ua.pt

Phone: (+351) 234247190, ext. 22016

Fax: (+351) 234370089

Vera Fernandes - verafernandes@ua.pt

Phone: (+351) 234401571, ext. 22098

Fax: (+351) 234370089

